



CHARLES KNIGHT  
ESTATE AGENTS



## 22 Limes Grove

, London, SE13 6DE  
£1,850

Spacious Newly Refurbished 1 Bedroom Flat with Dedicated Office in Prime Lewisham Location

A beautifully large and newly refurbished one-bedroom flat, ideal for a young professional or couple, offering modern living with the added advantage of a separate office space — perfect for those working from home or needing a quiet study area.

This stylish property boasts a generous open-plan living area filled with natural light, a contemporary fully fitted kitchen, a double bedroom with plentiful storage, and a sleek bathroom finished to a high standard. The versatile office room provides the flexibility to create a productive workspace, guest room or hobby area.

#### Location:

Situated in the heart of Lewisham, this flat enjoys excellent connectivity and local amenities. Lewisham Station offers direct services on National Rail and the Docklands Light Railway (DLR), providing quick and convenient access to London Bridge, Cannon Street, Canary Wharf and beyond — perfect for commuters and city workers alike.

#### Transport Links:

Lewisham Station: National Rail & DLR services within walking distance.

### Viewing

Please contact our Lewisham Office on 02088 524441 if you wish to arrange a viewing appointment for this property or require further information.



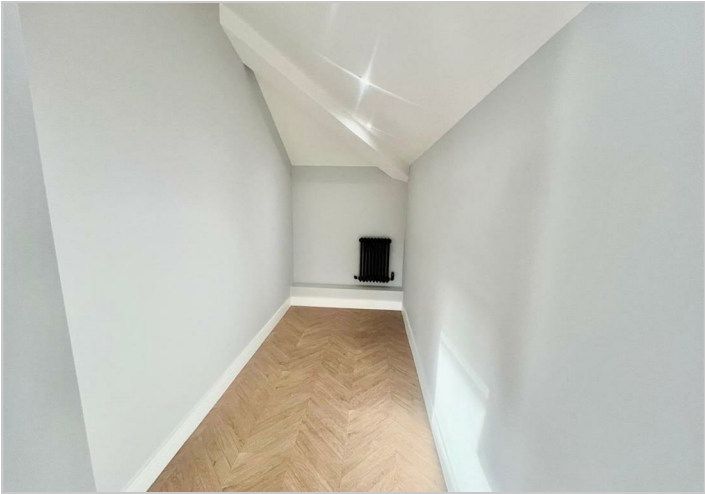
Floor Plan



Area Map



Energy Efficiency Graph



These particulars, whilst believed to be accurate are set out as a general outline only for guidance and do not constitute any part of an offer or contract. Intending purchasers should not rely on them as statements of representation of fact, but must satisfy themselves by inspection or otherwise as to their accuracy. No person in this firms employment has the authority to make or give any representation or warranty in respect of the property.